



WEST MIDLANDS
VIOLENCE
REDUCTION
PARTNERSHIP

ANNUAL REPORT
2022 - 23

Contents

Foreword	3
Introduction	4
Delivery model	5
Building solid foundations	7
Place based approaches	9
Health	11
Education	14
Exploitation	19
Criminal Justice and Policing	21
Faith and Communities	24
Sport	27
Conclusion	29

Foreword

The Violence Reduction Unit (VRU) was formed in October 2019 in response to rising violence, including knife crime. It has now become known as the Violence Reduction Partnership, to emphasise the joined-up nature of our working and co-creation with other public sector partners, as well as with the communities we exist to serve.

The West Midlands Violence Reduction Partnership (VRP) is based on the principle that everyone has a role to play in violence reduction. The partnership brings together public sector bodies, to acknowledge that our mission should be one that is driven by a committed, collective and co-operative effort to prevent violence, protect young people and save lives.



Sadly, there are still far too many of our young people being impacted by violent crime as a consequence of many factors, that include inequality, poverty, abuse, neglect, lack of opportunity, low educational attainment and exploitation. It is our responsibility as public sector bodies, as schools, as faith organisations, as parents and simply as members of the communities we live in, to safeguard and protect our young people and hold ourselves and each other to account for the wellbeing of young people around us.

The VRP aims to address the underlying causes of violence and prevent it from happening in the first place, because the prevention of violence will always be better than having to deal with the consequences of violence.

However, we also work to provide the guidance and support needed to create options, opportunities and routes out of violent crime. Working with local authorities, health and other partners, we aim to support thousands of young people across the West Midlands, to enable them to lead happy and fulfilled lives away from violence.

Simon Foster
West Midlands Police and Crime Commissioner

Introduction

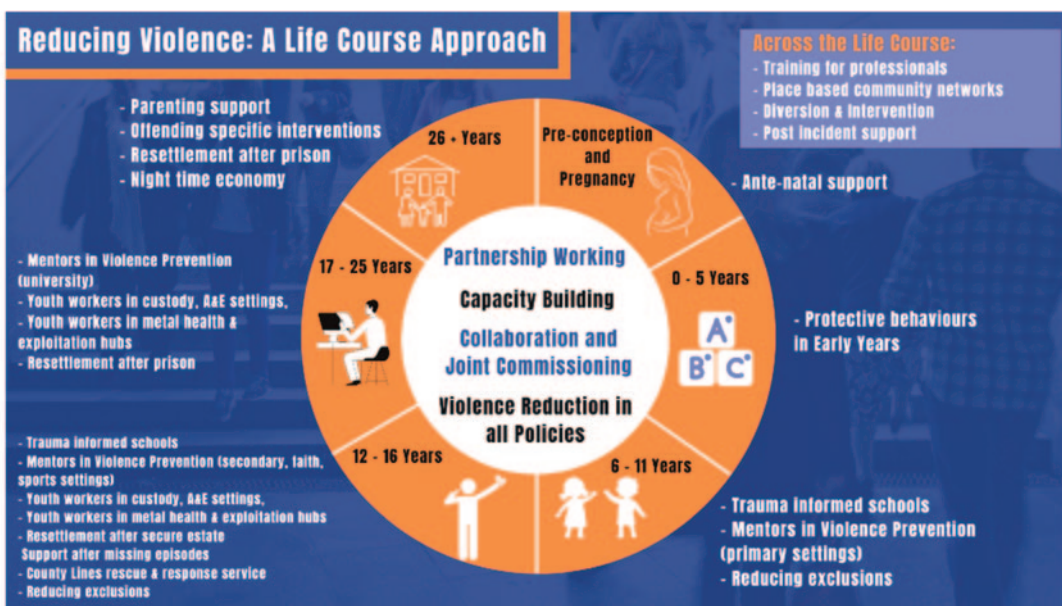
The West Midlands Violence Reduction Partnership (VRP) is one of twenty VRPs across the country established in 2019 funded by the Home Office to build capacity in local places and systems, and to tackle the root causes of violence. The VRP consists of public, private, voluntary and community sector organisations, bringing efforts together across the West Midlands Metropolitan Region to tackle the root causes of violence, such as poverty and inequalities.

The VRP Team is made up of a range of specialists who work regionally and locally to facilitate and encourage the development of system wide responses to preventing and reducing violence; as well as directly delivering and commissioning a range of services/interventions. The team actively work with local violence reduction partnerships to support their local violence prevention/reduction systems, enabling everyone from frontline workers to senior leaders to access data and information about the nature of violence in the region; supporting them to prepare for the requirements of the Serious Violence Duty; and leading on developing and sharing a robust evidence base to understand the impact of interventions.

The VRP is required to lead on the production of an annual violence strategic needs assessment (SNA) and a **response strategy**. The SNA presents a sound, common understanding and profile of people and places most vulnerable to violence and local geographical areas most affected. The response strategy is informed by the 2022/23 SNA and describes what we will do to prevent and reduce violence.

This annual report provides an overview of the VRP, our ambitions and the way we work as well as an update on what we have been doing over the last 12 months.

The VRP takes a life course approach to preventing and reducing violence.



Delivery Model



The VRP delivery model aims to:

- Deliver primary prevention, whole population approaches to violence prevention and reduction, including training, capacity building and awareness raising.
- Fund targeted work in areas we know are impacted more by violence.
- Respond effectively as a partnership to incidents when they occur to limit the onward transmission of violence and address the trauma that serious incidents cause to individuals and communities.

This year VRP funded interventions reached 59,873 young people aged 24 and under and 523 over 24. The training and awareness raising the VRP provide reached 7,053 professionals. The Partnership was able to significantly increase the delivery of primary prevention across the region with the recruitment of a new team of Training and Intervention Facilitators. They are now working on a daily basis in schools and other youth focused settings across the region, reaching around 2,000 children, young people and professionals each month.



Building Solid Foundations

Data and Evaluation

Building Solid Foundations

The VRP focuses on promoting a public health approach which seeks to understand and address the root causes of violence and tackle them as early as possible to prevent violence from occurring. Testing different approaches, evaluating them and scaling up the things that work. Our dedicated Data and Insights team work closely with the Evaluation team to collect and analyse quantitative and qualitative data from across the region which helps us understand the nature of violence and who it affects the most.

Key Highlights

- Developed interactive data dashboards to provide an accessible picture of violence across the region.
- Launched the **commissioning dashboard** which enables anyone to see the different projects and programmes commissioned by the VRP and the Office of the Police and Crime Commissioner
- Provided a range of data to local authorities to support them in their response to the Serious Violence Duty
- Continued to develop and extend the information collected from a range of agencies and communities to enable us to better understand violence across the region
- Step Together route planning informed from the beginning by robust data and story maps, ensuring the right routes are established in the right places
- Supported partners in Birmingham and Sandwell to produce a comprehensive, interactive map of youth activity to inform more effective planning of provision over the summer
- Worked with commissioned providers to improve the data that they collect so that the VRP has the best possible understanding of the impact of interventions
- Developing a central repository which will bring together all local academic and other evaluations in addition to good practice and problem solving approaches emerging from the VRP delivery team.
- Led on five core evaluations:
 - A **system change evaluation** of the relationship between the core VRP and West Midlands Police
 - An **Evaluation of WMP Trauma informed training**
 - **Birmingham model update** – focusing on provisions and interventions for gangs.
 - A follow up **qualitative evaluation of Step Together**
 - A **pilot study of Round Midnight**
- Published academic papers including:
 - A Systematic review of Knife Crime Responses
 - A Systematic review of evidence of early year interventions
 - Tizz Time process analysis
 - Network Analysis in Three Estates

Priorities for 2023/24

To continue to lead on the development of partnership data sharing processes and systems in order to inform the prevention and reduction of serious youth violence, and to strengthen the evidence base through evaluation.

The background of the slide features a warm, golden-brown bokeh effect with out-of-focus light circles. In the foreground, the dark silhouettes of several people are walking away from the camera, their forms partially obscured by the bright light. The overall mood is one of a busy, illuminated urban environment at night.

Place Based Approaches

We are working within localities, understanding their individual needs and assets and tailoring violence prevention activity and interventions so that they are more effective.

Place Based Approaches

Key Highlights

- Established a comprehensive prevention programme for schools, to develop consistent, long-term approaches to prevention which is reaching almost 2,000 young people and frontline professionals per month.
- Commissioned local projects that provide a range of support, activity, intervention and training to almost 7,000 individuals per year who are at risk of engaging in or being exposed to violence. The majority of that activity reaches young people aged under 25, and frontline professionals who work with children and young people.
- Co-ordinated a partnership response to over 200 incidents of serious violence to ensure communities, young people and professionals are supported and get access to services quickly.
- Continued to develop work with parents and carers through forums and awareness raising sessions.
- Developed a number of community pilots, aimed at increasing the role communities play in violence prevention and most importantly, giving communities a voice and an opportunity to contribute to making their community safer.
- Increased the membership of local stakeholder networks to 1,000, bringing more people together to explore the role they can play in violence prevention and coordinating resources in areas affected by violence.
- Created Safe Spaces, community events, and art and sports projects in local places to engage young people and support them to access support and interventions.
- Supported the introduction of more knife bins across the West Midlands contributing to public reassurance and community safety more broadly. [Weapon Surrender Bins - West Midlands Police & Crime Commissioner \(westmidlands-pcc.gov.uk\)](https://www.westmidlands-pcc.gov.uk)
- Supported local violence reduction partnerships to access additional funding, for example, successfully receiving additional funding to deliver detached youth work across the city to mitigate the risk of summer violence spikes.

Priorities for 2023/24

We will continue to strengthen our local delivery model and supporting the provider networks across the region. We will also further intensify our focus on co-design and co-production, working with communities and young people, making sure they are at the centre of everything we do.



Health

We are working with Integrated Care Boards and systems to influence priorities and interventions in primary care, hospitals and other health specialists/settings, enabling more opportunities to intervene earlier to prevent and reduce violence and exploitation

Health

Key Highlights

- Commissioning youth violence intervention projects based in Emergency Departments across 7 hospitals, reaching 1,500 young people and providing key training to 1,000 professionals over the year, which offer support to children & young people when they are most vulnerable
- Created a range of guidance for clinicians including co-authoring an NHS Rapid Read on non-fatal strangulation, highlighting the new offence from Domestic Abuse Act 2021, and the now illegal practice of 'virginity testing'.
- Supporting the establishment and opening of the UK's Institute for Addressing Strangulation (IFAS) including collaboration on medical guidelines and dissemination.
- Supporting health partners in understanding the Serious Violence Duty and how all services across health settings can have an impact on violence prevention.
- Sharing learning on violence, exploitation and optimum health response with different networks of health practitioners Safeguarding GPs, NHS Trust safeguarding leads and NHS England.
- Collating information and data on violence against healthcare professionals across the West Midlands. Supporting Trusts with policies, working groups and best practice strategies to prevent this increasingly serious and prevalent problem which has heightened post pandemic.

Mental health

- Provided Cognitive Behaviour Therapy (CBT) based counselling sessions for 131 children & young people, offering up to 12 sessions each.
- Launched a new CBT based therapeutic service in September, targeting high risk children and young people particularly those under Youth Offending teams, in alternative education or at risk of exclusion.
- Provided access to and intervention from Clinical Psychologists to young people and the frontline workers who support them. Provided psychological advice, case formulations and clinical supervision, as well as contributing to partnership responses to incidents of serious violence.
- Hosted a 'Youth Mental Health Roundtable' event to develop a deeper and clearer understanding of the key issues affecting mental health in the region and to identify priorities to collaborate on. This has informed future planning including piloting an intensive whole-college approach in Further Education and testing new approaches with Mental Health Support Teams in schools.

Health

- Supported trauma informed responses following 'serious incidents', such as incidents of serious violence in colleges or schools, particularly supporting staff and leadership in creating a supportive environment which recognises the trauma

Priorities for 2023/24

We will continue our work with the health sector to identify further opportunities to prevent and reduce violence and work in partnership to improve our early responses to emotional/mental health and wellbeing support for young people

Case Study - Lee (Pseudonym), 13 years old A and E Navigator Service

Lee came to hospital with multiple injuries he sustained from an assault perpetrated by 5 other children. The most serious injury Lee suffered was to his leg which meant he was signed off from school for 6 weeks until he healed. While healing we worked with Lee's family and the school to make sure his re-engagement into school would be successful and he felt safe to attend. Unfortunately, no one was ever charged with his assault which made Lee more anxious about re-attending and seeing the people that injured him. It was decided by school, family and Lee that he would move schools for his safety. We collaborated with the school and family services to arrange a 'team around the child meeting' to make sure we were all doing what we could for the best interest of Lee. We have been able to support Lee back into an educational setting where he feels safe and he is now attending regularly.



Education

We aim to support the education system to prevent violence and exploitation

Education

Key Highlights

- Developed a curriculum to complement the Knives Virtual Reality intervention within our preventative offer. The pilot was completed in a primary school in Birmingham.
- Established 26 Step Together routes across the West Midlands, benefiting up to 25,000 children who walk those routes before and after school.
- Supported 9 secondary schools in Sandwell who now have their own plan centred around Violence Reduction which has been created in partnership with VRP, Police, LA and schools.
- Recruited a team of facilitators and since December 2022, they have delivered training interventions and workshops to around 2,000 children, young people and professionals a month.
- Continued to support the work of the Department for Education taskforces in the region.
- Supported better connectivity across partnerships in Birmingham through the aligning of activity, creating space for shared objectives, reducing duplication and streamlining pathways.
- A Serious Violence Young People Board was launched in Birmingham bringing together key partners and strategic leads to discuss children at risk and explore opportunities for intervention and support to prevent harm.
- Strengthened the prevention work in the Further and Higher Education sectors through steering groups and partnership work.
- Developed a primary prevention programme for schools to support education settings to change their approach to prevention, avoiding one-off interventions and instead building academic year-long prevention plans for the setting.
- Worked in partnership with Department for Education taskforces in Birmingham to begin to standardise mentoring across Birmingham, leading to more consistency and improved provision for young people.

Education

Violence Against Women and Girls (VAWG)

- Developed and delivered monthly Preventing Violence against Women and Girls training sessions for professionals. Since September there have been approximately 50 people trained each month and feedback has been positive.
- Supported the delivery of a programme in schools to address harmful sexual behaviour in targeted groups of boys to address early concerns.
- Developed and enhanced materials on understanding and preventing VAWG for our Mentors in Violence Prevention Programme (MVP) programme.
- Launched the 'Helping Hands' project for children in nurseries in Birmingham, using the 'Protective Behaviours' approach to teaching about personal safety, healthy friendships, asking for help etc. This is accompanied by training for staff in understanding & responding to domestic abuse.
- Continued to fund the delivery of early years prevention in Coventry and Solihull, reaching around 2,000 nursery and primary school aged children.
- Commissioned and developed four short stories for early years settings designed to teach children about positive friendships, respect, and equality.
- Started to develop a violence & VAWG prevention training package of support for universities across Birmingham.

Priorities for 2023/24

Influencing education systems at a strategic level to play an active role in violence prevention; developing plans to sustain the Step Together Project; delivering an ambitious universal primary prevention programme within education in the West Midlands; and continuing to promote a preventative approach to VAWG.

Education

Case Study: Step Together

The West Midlands VRP was approached by the Home Office in 2021 to host a national pilot within the UK of a school project that had been trialled in Chicago under the name 'Safe Passage'.

Step Together seeks to increase children's safety as they make their way home from school. The project deploys 'Chaperones' (highly trained detached youth workers) outside the school gates who walk a set route home with children. They are tasked with de-escalating conflict, engaging with young people and working closely with partners to ensure safeguarding is a priority. Across West Midlands there are 27 active routes being delivered across the 7 areas in the region.

Step Together is now part way through its second academic year and feedback on the impact of the programme is promising. Since it was established Step Together has offered safeguarding interventions during critical incidents, as well as day to day support to children and their families, as well as to communities living and working around the routes.

Step Together staff have successfully supported children into mental health support, supported children and their families into food and clothing banks, supported hundreds of children into after school diversionary activities, mentoring and counselling and work closely with statutory services to ensure safeguarding of the most vulnerable.

Education

Case Study: Responding to Incidents of Serious Violence

Following an incident of serious violence involving children from a local school, WM VRP worked closely with key partners, including the school, to deliver coordinated interventions to both offer support to young people who had experienced trauma as a result of the incident and to limit the potential for more violence and/or retaliation to occur.

The school had not previously experienced such a serious incident. Contact was immediately made by WM VRP with the leadership at the school, and partnership meetings were arranged to align efforts to support the children and young people.

VRP staff attended the school and arranged daily update meetings.

The VRP worked closely with the school to establish the immediate support needs, and also worked with them to develop a year long prevention plan, including the following interventions for the school:

- Whole year assemblies
- MVP
- Introduction to Adversity
- Knife arch with mentoring support available
- Precious Lives delivery from lived experience mentors
- Exploitation awareness for parents
- School have recruited additional pastoral workers
- Pastoral team took part in exploitation and county lines training

Following immediate support in the days and weeks after the incident, VRP has continued to deliver the program outlined above for the school over the last year.

The support WM VRP offer in contributing to responses to serious violence clearly highlights the need for tailored, and immediate but ongoing work to be delivered by coordinated partnerships in the aftermath of serious violence. The school and school community have provided excellent feedback in relation to the support they received after this incident happened, and we have been able to develop a robust response protocol that ensures that we can offer this type of support when similar incidents occur across the region.



Exploitation

We aim to improve the way agencies work together to respond and disrupt exploitation, ensuring a contextual approach to understanding and managing associated risks.


Exploitation

Key Highlights

- Embedded two tackling exploitation navigators across the 7 local authority exploitation and missing hubs.
- Continued to lead regional multi-agency operational and strategic meetings to improve the local and regional response to all forms of exploitation.
- Commissioned pilot projects to provide support to young people when they are most vulnerable, i.e. co-location of a lived experience youth worker in custody.
- Increased awareness and response to women and girls at risk of or entrenched in violence and exploitation.
- Launched the Exploitation and Abuse Competency Framework to support the training and development of workforces across the region, enabling them to understand how to identify and respond to exploitation and abuse.
- Facilitated discussions on a range of individual strands of work to respond to emerging risks including supporting the development of a forced concealment protocol; training re. Vietnamese missing and trafficked children; and guidance to support effective placement planning for children at significant risk of exploitation or violence.
- Continued to provide partnership tactical advice to Force, Regional Organised Crime Unit (ROCU) and National Crime Agency (NCA) to support their approaches to tackle and disrupt exploitation and supported a partnership approach to County Lines Intensification Weeks.

Priorities for 2023/24

Continue to lead partnerships to strengthen activity that prevents and effectively responds to exploitation, supporting good practice, sharing data and insights and raising awareness of the risks and the opportunities for prevention.



Criminal Justice and Policing

We are working to strengthen the responses within the criminal justice system and policing to violence, exploitation and vulnerability.

Criminal Justice and Policing

Key Highlights

- Engaged 9 men in prison who were considered to be some of the highest risk and violent individuals in the Rehabilitation Offering Another Direction (ROAD) programme which uses a restorative approach to provide space for individuals to reflect on their experiences and to set prosocial goals for their lives.
- Launched Op Paramount in September 2022, which is a pilot project identifying and supporting children and families impacted by parental imprisonment in North East Birmingham. In 2022/23, the pilot has supported 19 families in Birmingham. As part of the wider support and activities, the families were financially supported to attend a summer residential, giving them opportunities to engage with wider support, meet other children and parents impacted which reduces their isolation, and engage in activities designed to boost children's aspirations.
- Jointly presented with Thames Valley Violence Reduction Network and HM Prison and Probation Service (HMPPS) at the annual NHS Midlands conference to 400 attendees around support for children impacted by parental imprisonment.
- Commissioned a targeted re-settlement and support service for young people (aged up to 18) and younger adults (18-30) identified as either gang members or who are associated with serious violence and criminality, resettling in the community from custody or recently having been released from the secure estate. This year 284 young people have been supported by our desistance and resettlement projects and 50 professionals have received training from these services.
- Supported the development of the Community Initiative to Reduce Violence (CIRV) projects in Coventry & Wolverhampton which is based on a focused deterrence strategy. West Midlands are leading on 2 out of 5 of the pilot sites, these projects will be the largest of their kind to be evaluated in the UK.
- Supported in facilitating the first ever **Hope Hack** workshop in a prison / secure estate which was delivered to approximately 60 young people and their solutions will be included in the Re-imagined Manifesto which will be presented to parliament in December 2023. 'Hope Hack' workshops capture solutions from young people on key topics such as Education, Poverty, Mental Health, Race and Equality.

est

Priorities for 2023/24

Continue to identify opportunities to improve prevention in the Criminal Justice System by working collaboratively with probation, prisons and secure estate. Working in partnership with West Midlands Police, aligning activity with grip funded project (Project Guardian). Support West Midlands Police to become a trauma informed police force.

Criminal Justice and Policing

WVRS: Case Study



REFERRAL

Mr X was referred to the service whilst still in custody. Mr X is subject to Multi-Agency Public Protection Arrangements and he expressed he wanted to complete some work around thinking and behaviours



NEXT STEPS

Due to Mr X's violent and unpredictable past behaviours, an assessment was carried out by Catch22 Project Worker and Social Services. In collaboration with Social Services the risks were highlighted regarding Mr X. An action plan was formulated by Catch22 Project worker to commence support around "Thinking and Behaviour" to help Mr X understand and best mitigate those identified risks.



ACTIONS

Having over a period of time built a positive working relationship with Mr X, he gave permission to gain access to the Risk Assessment Report completed by his social worker. This enabled the project worker to fully understand the risks that were of concern. From this the project worker identified and gathered resources and arranged a one to one meeting with Mr X at a suitable venue in the community, to commence some focused work around his risks, for Mr X to gain a better understanding through consequential thinking techniques.



OUTCOME

Mr X engaged well with workbooks; a really positive session was held with positive outcomes. After holding an update meeting with Social Services around Mr X's progress, social worker was happy with his engagement and supports him attending appointments with Catch22. Mr X remained focused and showed an understanding of his behaviours and the ripple effect they would have on his life. Had it not been for Catch22 supporting, Mr X would have been overwhelmed by the social worker report and how to move forward with his life in a positive way, which may have led to Mr X reoffending. With the support of Catch22 Mr X has found a new found appreciation for the work of Social Services and knows it is an essential part of his rehabilitation.



Faith and Communities

During the course of the year, the Faith Alliance workstream broadened to become the 'Faith and Communities' workstream now including a wider range of faith, community, youth and business engagement.

Faith and Communities

Key Highlights

- Released a **short film** 'Declaration of Hope' which shows how and why faith communities are already working to keep young people safe across the West Midlands. You can watch the short film here: <https://westmidlands-vrp.org/faith-and-communities/>
- Hosted a **Faith Alliance Summit** at Coventry Cathedral bringing together over 150 faith representatives and statutory partners around the youth violence agenda.
- Launched our pioneering new **Toolkit for Faith Communities** which is a co-produced resource providing ideas and best practice for how faith communities can help prevent violence. Download the Toolkit here: <https://westmidlands-vrp.org/faith-and-communities/faith-alliance/>
- Worked alongside Nottinghamshire and Leicestershire Violence Reduction Units to host a '**Midlands Hope Hack**' in Coventry. This youth-led event gathered 150 young people and adults to problem solve some of the most pressing challenges affecting young people in the Midlands.
- Promoted a human trafficking awareness campaign called '**It's a Penalty**' that ran before and during the 2022 Commonwealth Games in Birmingham.
- Worked alongside Nottinghamshire and Leicestershire Violence Reduction Units to host a '**Midlands Hope Hack**' in Coventry. This youth-led event gathered 150 young people and adults to problem solve some of the most pressing challenges affecting young people in the Midlands.



Faith and Communities

- Developed a Youth Assembly, recruiting young people from across the region in order to give them a leadership role within violence prevention in the West Midlands, empowering them to lead a robust counter-narrative that promotes the talent and brilliance of the West Midlands' young people
- Took the new Toolkit on a '**Roadshow**' of the West Midlands with the aim of embedding the learning in local communities. Six in-person workshops were organised across the West Midlands, reaching 160 people.
- Hosted a ground-breaking 'Faith and Violence Reduction' **national webinar** during Inter-Faith week, attended by 50 people, involving speakers from the West Midlands and other parts of the country sharing best practice on the role of faith communities in violence reduction.
- Evaluating three different community engagement and co-production **pilots** to understand what works to increase community involvement in the work of violence reduction. The three pilots include community-led action groups, a Community Champions scheme and a parent-led forum.
- Established a new **Faith Alliance Steering Group to encourage more sustainable, community-led change.**
- Doubled the size of the Faith Alliance network from 200 to 400 members. Many of the member organisations can be found showcased through our **Connect Directory** resource.

Priorities for 2023/24

Continue to strengthen the role and reach of the Faith Alliance and increase the work we do on co-production and community engagement. Ensure that the Youth Assembly provides an accessible vehicle through which young people can get involved in and influence our work.

A photograph of three young men in orange and black soccer uniforms running on a grass field. They are wearing black socks and orange cleats. There are several yellow soccer balls on the grass. The background is a blurred green field with trees.

Sport

We continue to strengthen the role of sports as a violence reduction intervention.

Sport

Key Highlights

- Further strengthening of the workforce by upskilling 21 staff/volunteers from 14 community sport organisations in Choice Theory mentoring practice in partnership with **Developing Youth Practice**.
- Working in partnership with **Street Doctors** and multi-agency partners to deliver targeted workshops to over 40 young people who are vulnerable to being involved in violence.
- 14 young people from VRP high priority places gained accredited level 1 award in developing activities for communities qualification delivering youth-led activities in their local neighbourhood.
- 4 locally trusted organisations (LTOs) commissioned and supported to deliver evidence-based sports-based interventions in high priority areas of Walsall as identified by the first Community Sport Strategic Analysis Tool completed in 2021.
- Over 300 young people in the secondary tier of need who are vulnerable to being involved in violence engaged in newly activated sport & physical sessions in Walsall neighbourhoods in Palfery, Caldmore and Pleck.
- A series of regular exploitation awareness sessions to the community sport workforce developing their knowledge on all forms of exploitation and how they can support young people and prevent exploitation through safety planning and contextual safeguarding.
- Regional VRP sport event for professionals with over 100 attendees and launch of the WM Sport & Violence Prevention Strategy.
- The completion of a refreshed West Midlands community sport audit engaging with over 80 organisations working to support vulnerable young people through sport and physical activity.
- Supporting 22 local trusted organisations across the region as part of the **Youth Justice Sport Fund** to deliver sporting interventions for young people aged 10-17, at-risk of involvement in crime, anti-social behaviour and serious violence.

Priorities for 2023/25

Grow the number of high-quality sport provisions in the most deprived and vulnerable communities which contribute to the prevention of violence; enhancing the confidence, competence and capacity of the sport workforce to ensure high quality delivery which is pro-social in its approach and embeds the principles of trauma informed practice; and increasing the number of vulnerable/at risk young people meaningfully, and successfully, referred into sport through evidence-based, multi-agency referral pathways.



Conclusion

Conclusion

West Midlands Violence Reduction Partnership continues to work with communities and partners across the region to embed a public health approach to preventing and reducing violence. Our work reaches thousands of children and young people every year. We also provide training to support frontline professionals working with young people.

We have achieved so much together over the last 3 years, even in the face of a pandemic and the cost of living crisis which has pushed some of our poorest communities into even more poverty. We know that violence has a disproportionate impact on some of our most disadvantaged places and people and therefore over the next two years we are determined to ensure that we target our efforts where we can make the biggest difference as well as improving the way we work with and for communities and young people.

We will be having a key focus on continuing to provide more training, intervention and support to young people and the professionals who work with them. We will continue to develop strong partnerships that work together to address the complex root causes of violence at the earliest opportunities in the lives of young people. These partnerships will be supported to develop long term and sustainable approaches to violence prevention and reduction that really make a difference.

Everyone has a role to play in violence prevention and reduction, and with so much to celebrate about the West Midlands, we will continue to provide a way for people to become actively involved in the long lasting change our region needs, and by increasing our reach even further and bringing people together we will build a strong movement that creates a generational change and provides the conditions for our young people to thrive.

